



Odorox® Slimline™

Hydroxyl Generator

Air & Surface Protection

Owner's Manual



Table of Contents

SAFETY INFORMATION.....1

PACKAGE CONTENTS5

SYSTEM PLACEMENT6

WALL-MOUNT INSTRUCTIONS 7

OPERATING GUIDELINES13

OPERATING INSTRUCTIONS..... 14

CARE INSTRUCTIONS15

OPTIC REPLACEMENT INSTRUCTIONS 16

FILTER CLEANING & REPLACEMENT 17

SPECIFICATIONS, REPLACEMENT PARTS & LIMITED WARRANTY 18

LIMITED USE END-USER LICENSE AGREEMENT.....21



Safety Information

Warning!

Use this hydroxyl generator only for its intended purpose as described in this Owner's Manual.

PLEASE READ AND SAVE THESE IMPORTANT SAFETY INSTRUCTIONS.

IMPORTANT SAFEGUARDS

When using this system, basic safety precautions should always be followed to reduce the risk of fire, electric shock, and injury to persons, including the following:

- Read all instructions before using this hydroxyl generator.
- To avoid fire or shock hazard, plug the equipment directly into a grounded AC electrical outlet.
- Remove all packaging material before use.
- Keep the cord out of heavy traffic areas. To avoid fire hazard, NEVER put the cord under rugs, near heat registers, radiators, stoves, or heaters.
- To protect against electrical hazards, DO NOT immerse in water or other liquids. DO NOT use near water.
- WARNING!: Always unplug the generator before moving it, cleaning, or whenever the generator is not in use. Be sure to pull by the plug and not the cord.
- NEVER drop or insert any object into any openings.
- DO NOT operate any generator with a damaged cord or plug, if motor fan fails to rotate, after the generator malfunctions, or if it has been dropped or damaged in any manner. Return generator to manufacturer or authorized repair facility for examination, electrical or mechanical adjustment, or repair.
- Use generator only for intended use as described in this manual. Any other use not recommended by the manufacturer may cause fire, electric shock, or injury to persons. The use of attachments not recommended may cause hazards.
- INDOOR USE ONLY!

Safety Information

- NEVER block the air openings, grills/outlets or place on a soft surface such as a bed or sofa, as this could cause the unit to tip over, blocking the Air Intake Opening/Grill.
- Keep unit away from heated surfaces and open flames.
- CAUTION!: for general ventilating use only. DO NOT use to exhaust hazardous or explosive materials and vapors.
- DO NOT attempt to repair or adjust any electrical or mechanical components on this unit. Doing so will void your warranty. The inside of the unit contains no user serviceable parts. All servicing should be performed by authorized personnel only.
- DO NOT plug the cord in with wet hands: electric shock could result.
- NEVER use detergents, gasoline, furniture polish, paint thinner or other household solvents to clean any part of the generator.
- DO NOT under any circumstances cut or remove the third (Ground) prong from power cord. For personal safety, this generator must be properly grounded.
- KEEP OUT OF THE REACH OF CHILDREN.
- WARNING – UV radiation emitted from this device.
- Unintended use of the device, or damage to the housing, may result in exposure to ultraviolet radiation.
- Ultraviolet radiation may cause eye and skin irritation.
- Avoid exposing eyes and skin to ultraviolet radiation.
- The use of this device is a supplement to and not a substitute for standard infection control practices to control transmission of infections; users must continue to follow all current infection control practices, including those practices related to cleaning and disinfection of environmental surfaces.

Safe Handling and Disposing of Mercury

Mercury is used in the Slimeline™ device in order to generate the plasma needed to produce UV-C radiation. This is similar to the use of mercury in many types of commercial, fluorescent light fixtures. As long as the glass or quartz outer bulb is intact, mercury is contained within the fixture and poses no health hazard. In the event that an optic breaks, less than 25 mg of mercury could be released. This is much less than what is present in a commercial thermometer. Liquid metallic mercury is hazardous due to its potential to release mercury vapor. In humans, approximately 80% of inhaled mercury vapor is absorbed via the respiratory tract, where it enters the circulatory system and is distributed throughout the body. Short term exposure to 25 mg of spilled mercury does not pose a health hazard, **provided that the source of the mercury is removed promptly**. Chronic exposure by inhalation, even at low concentrations in the range 0.7–42 µg/m³, can cause effects such as tremors, impaired cognitive skills, and sleep disturbance in workers. The OSHA limit for occupational exposure of elemental mercury is 0.1 mg/m³. Mercury is also used in most fluorescent light fixtures.

In the event that the device optic light does not function, the optics should be checked to ensure that they are intact. If the optic is cracked, but not broken, it should be replaced. Cracked optics should be double sealed in plastic bags and disposed of according to local, approved procedures. In the event that the optic breaks and the mercury is spilled, clean-up should be done immediately according to the following procedure published by the Environment Protection Agency.

- Evacuate the room for at least 15 minutes.
- DO NOT attempt to clean up the spill with a vacuum cleaner, mop or broom.
- Dispose of clothing, fabric etc. that has come in contact with mercury; DO NOT wash.
- Only the individual to clean up the spill should re-occupy the space.
- Close the doors to the area of the spill and turn off the HVAC system; open exterior windows and direct room air out of the window with fans or use an exhaust fan if the area is equipped with one that vents directly outdoors.
- Cover shoes with disposable foot covers or wear shoes that will be disposed of.
- Remove jewelry as mercury will amalgamate with metals and ruin them.
- Use a commercial mercury spill clean-up kit to remove the spilled mercury. (See list of suppliers on the next page).
- **Identify items in the spill area that can be cleaned and those that cannot.** Non-porous surfaces (finished wood, plastic or concrete) can be cleaned following this guidance. Porous surfaces or fabric-covered items (upholstery, carpeting, stuffed animals, pillows, backpacks, unfinished wood, cork, cardboard) are difficult to clean because mercury beads may be trapped in these materials. If you decide you cannot clean these items, place them in plastic trash bags or cover or wrap them in a double layer of plastic and carefully seal with tape. Place the wrapped items in a secure place, preferably outdoors and out of the reach of children and pets. You should consult with a trained professional about how to decontaminate or dispose of these items safely.
- **Wear gloves to carefully pick up the larger pieces of broken glass and what remains of the broken device and place them on a paper towel.** Gently fold the paper towel around these pieces so you can pick the bundle up and place it in a zipper-type plastic bag. **Use index cards or stiff cardboard to push smaller pieces of glass and mercury beads together into a pile.** Shine a flashlight at an angle to locate beads of mercury. The beads will reflect light from the flashlight. Check for mercury in cracks or in hard-to-reach areas where beads may be hidden or trapped. Check a wide area beyond the spill.

- **Use the eyedropper to collect mercury beads and place them in the plastic bag.** Hold the eyedropper at an angle to draw the mercury into the tip. Keep the eyedropper at an angle to stop the mercury from rolling back out until you can put the mercury into the plastic bag. Wrap tape (sticky side out) around your gloved fingers and carefully use it to pick up any remaining glass or beads. Check again with the flashlight to be sure that no beads of mercury remain.
- At this point, mercury beads may still be trapped in cracks or crevices on irregular surfaces. **Sprinkle sulfur powder over the contaminated area** and rub it gently all over the surface and into the cracks with a paper towel. Sulfur powder binds with mercury. Use a paper towel dampened with water followed by wiping with another damp paper towel to clean up the sulfur and mercury. Place the used paper towels in a zipper-type plastic bag.
- **Put all the items that were used to pick up the mercury, including index cards or cardboard, eyedropper, contaminated tape, paper towels, and zipper-type bags into the trash bag.** Carefully remove rubber gloves by grabbing them at the wrist and pulling them inside out as they come off. Place the used gloves in the trash bag.
- **Carefully seal the trash bag that contains the mercury-contaminated waste** and put it in a secure place, preferably outdoors and out of reach of children and pets until it can be disposed of safely.
- If possible, **open a window and use a fan to ventilate the area to the outdoors for 24-48 hours** before resuming normal use. If possible, heat the area (for example, with a space heater) while still ventilating to the outdoors. Avoid blowing the exhaust back indoors or into other nearby residences.
- **Clothes or shoes that did not come in direct contact with liquid mercury should be removed and put into the trash bag** that was left outside the contaminated area at the beginning of the cleanup. Close the trash bag and take it outdoors. Carefully remove the shoes and or clothing from the trash bag and air them out thoroughly outdoors for 24 to 48 hours. After the outdoor

airing, items that are washable can then be laundered.

- **Dispose of contaminated items properly!** Mercury-contaminated items should not be placed in the regular household trash. Contact your town or county officials for information about hazardous waste disposal in your community.

Mercury Spill Kit Suppliers

Crackle Scientific	800-334-7725
---------------------------	--------------

Lab Safety Supply	800-356-0783
--------------------------	--------------

Cole-Parmer	800-323-4340
--------------------	--------------

For schools and businesses only:

Fisher Scientific	800-766-7000
--------------------------	--------------

Mallinckrodt/Baker	800-582-2537
---------------------------	--------------

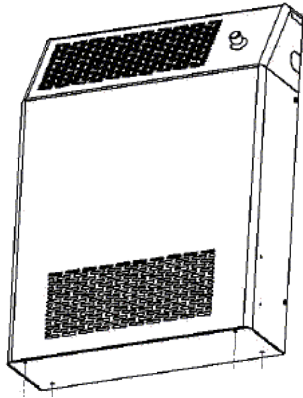
Sigma Aldrich	800-325-3010
----------------------	--------------

VWR Scientific	800-932-5000
-----------------------	--------------

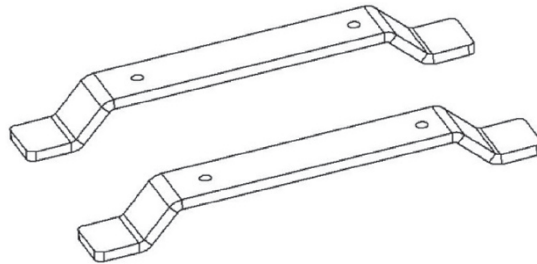
For schools only:

Fisher Scientific	800-452-1261
--------------------------	--------------

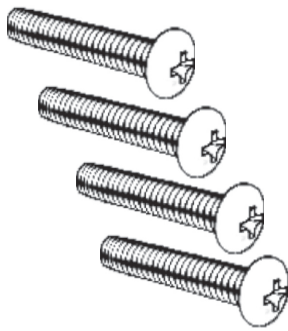
Package Contents



1) Odorox® Slimline™ Hydroxyl Generator w/Control Panel



2) Two base brackets



3) Four 8-32 x 3/4 inch Phillips (Star) machine screws



4) One 0.05 inch hex key

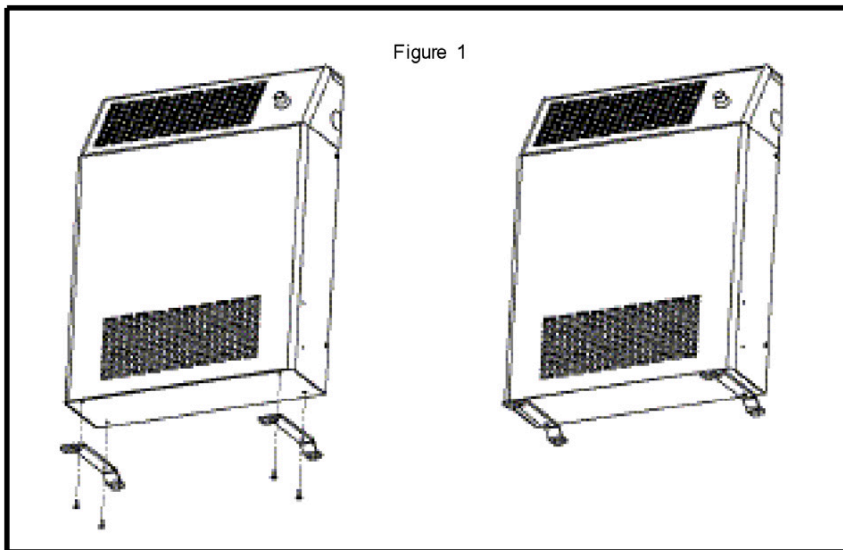
5) One Owner's Manual

System Placement

There are two options available when considering system placement:

OPTION ONE: PORTABLE FLOOR STAND

The Slimline™ may be used as a portable, free-standing unit, with the use of the enclosed base brackets (see [Figure 1](#))



OPTION TWO: WALL-MOUNT

The Slimline™ may be installed to a wall (see “Wall-Mount Installation Instructions” on page 7-12).

Wall-Mount Installation

Warning:

- STEP 1:** All electrical work must be done in accordance with local or national electrical code as applicable. For safety, this product must be grounded. If you are unfamiliar with methods of installing electrical wiring, secure the services of a qualified electrician.
- STEP 2:** When wiring, servicing or cleaning this unit, turn off power and lock out service panel. Failure to do so could allow others to turn on power unexpectedly which may cause fatal electrical shock.
- STEP 3:** To avoid electrical shock:
- DO NOT install generator in a tub or shower enclosure, or any location where it may come in contact with water.
 - Never place a switch where it can be reached from a tub or shower.
- STEP 4:** DO NOT install this generator in an area where chemicals or other flammables are stored or used. Explosion and fire may result.

Caution:

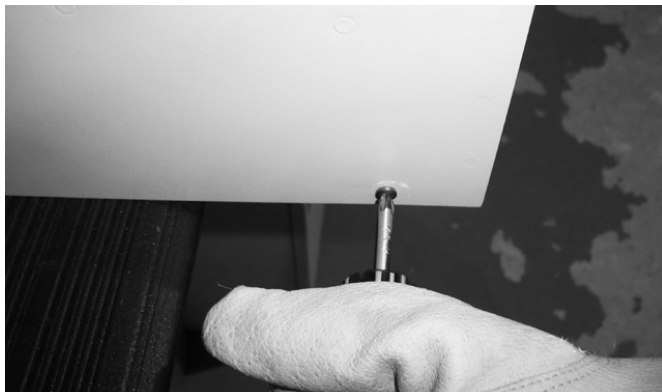
- STEP 1:** Install the hydroxyl generator at least 6" from floor or any adjacent vertical surface.
- STEP 2:** DO NOT locate the hydroxyl generator behind a door, furniture, drapes, etc., Where the air flow to the unit would be restricted.
- STEP 3:** DO NOT connect the hydroxyl generator to dimmer switch or speed control.
- STEP 4:** Please read specification label on product for further information and requirements.

Wall-Mount Installation

PLAN THE INSTALLATION

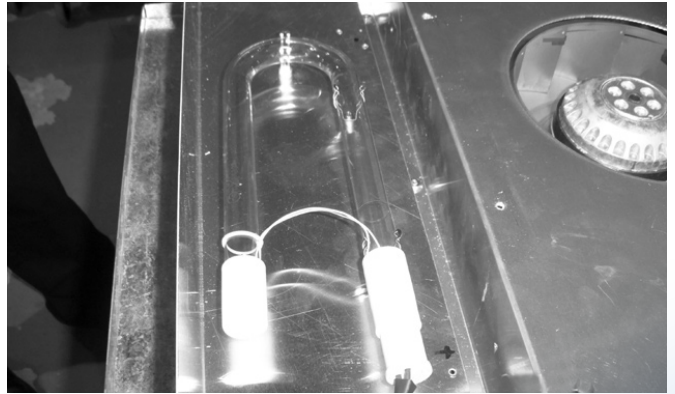
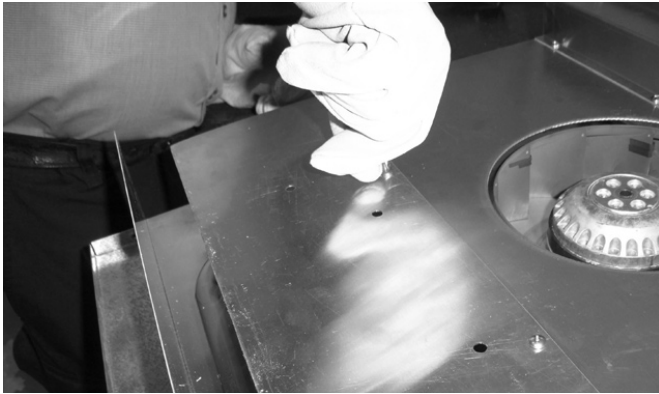
STEP 1: Carefully unpack Slimline™ and remove from plastic.

STEP 2: Remove four screws on side of unit, then tilt and pull cover.



STEP 3: Disconnect speed control/cover from main unit by means of the 'quick connect' and set aside on a clean surface.

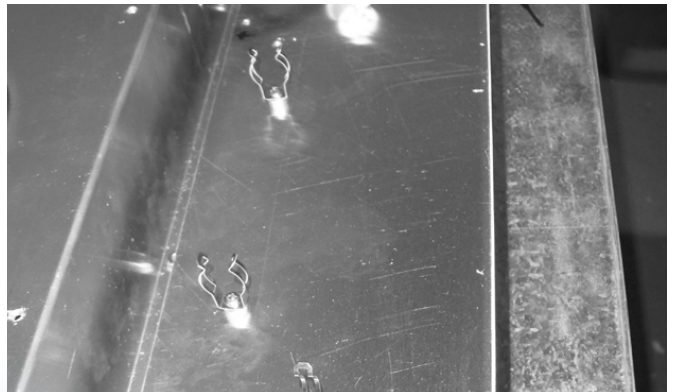
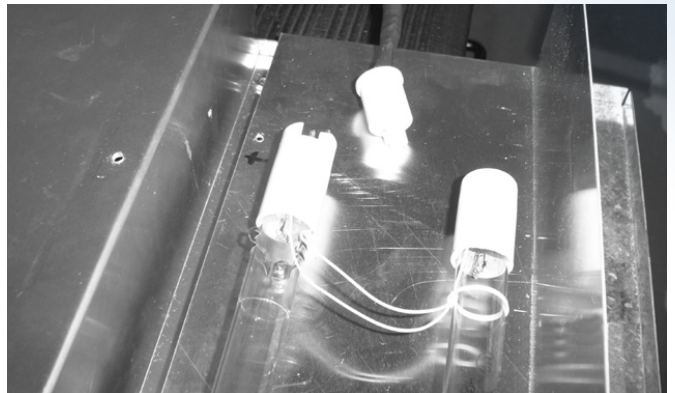
STEP 4: Remove optic reflection plate.



STEP 5: Remove lamp optic following these instructions:

CAUTION!: Use clean leather gloves and eye protection when handling the optics in this generator.

- Hold lamp base with one hand, and lamp connector with other hand.
- Gently 'wiggle' connector while pulling from lamp base.
- Gently pull lamp from three lamp supports.
- DO NOT put any pressure on side of lamp with no support.
- Temporarily store lamp in a safe, clean location.

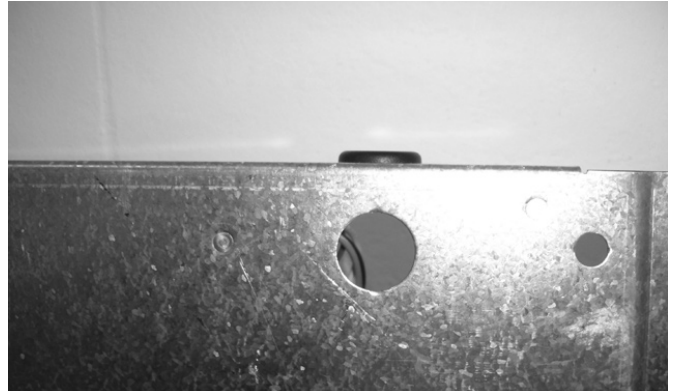


WALL MOUNT-INSTALLATION

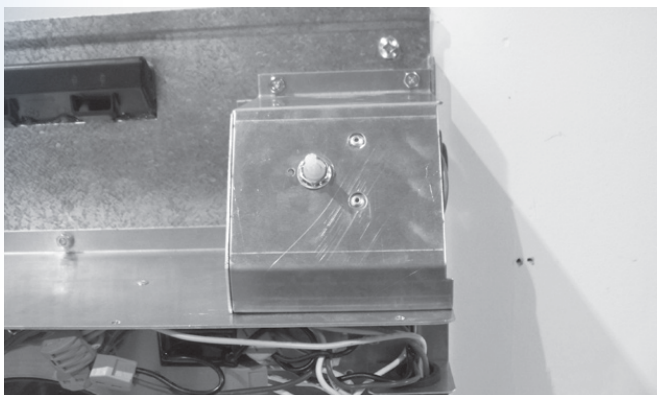
STEP 6: Knock out four pre-punched holes on back panel.



STEP 7: If wiring unit from back, knock out pre-punched 7/8 inch hole for electrical connector. If wiring from the side, knock out pre-punched hole on the side of the back panel.



STEP 8: Determine the desired installation location. This location must conform to the Warning and Caution instructions discussed earlier (see Page 7). This Slimline™ unit must be anchored securely to a wall or ceiling. The mounting screw locations are designed for standard wood/metal framing with studs on 16 inch centers. Using the back panel as a template, mark the screw locations onto the mounting surface so that unit can be screwed directly to the main studs. If there is not sufficient support at the desired location, support members must be added. Installer is responsible for the proper installation of this hydroxyl generator as per local building and electrical codes.



STEP 9: If wiring from back of unit, also mark the 7/8 inch hole onto the mounting surface for the main electrical connection.

STEP 10: Set back panel aside.

STEP 11: If wiring from back of unit, cut out hole size as needed for electrical connector, and install electrical service.

STEP 12: Ensure electrical service to this unit is turned off and locked out before continuing. Install electrical connector (not supplied) onto back panel, and make proper electrical connections.

STEP 13: Secure back panel to mounting surface using #10, 1 ½ inch wood screws (not supplied) for typical wood frame construction. If construction type is different, ensure proper support as per construction type and weight of hydroxyl generator.

STEP 14: If wiring from the side, install electrical service and make proper electrical connections.

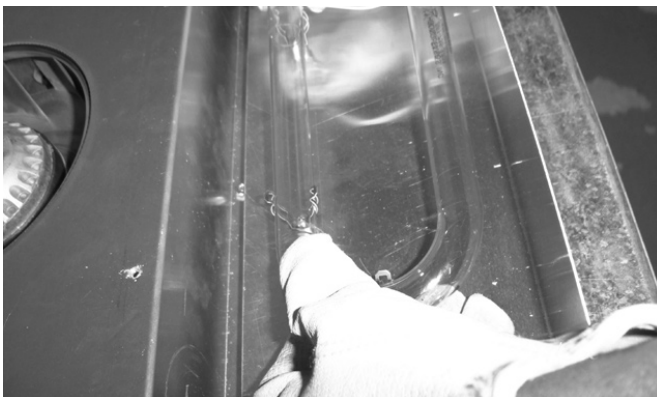
STEP 15: Re-install lamp optic following these instructions:

CAUTION!: Use clean leather gloves and eye protection when handling the optics in this unit.

- Gently press lamp into the three lamp supports.
- Re-connect lamp connector holding the lamp base with one hand, and lamp connector with other hand.

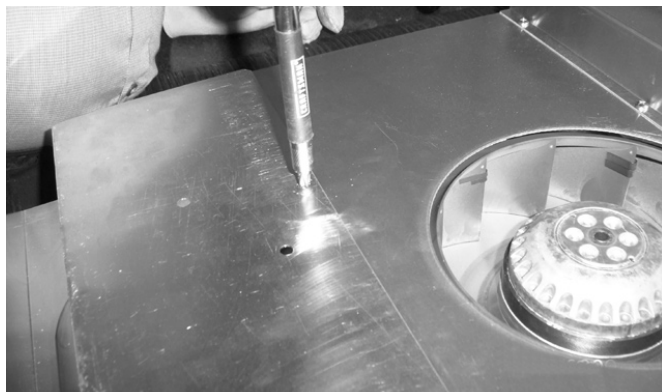
Note: Lamp connector is keyed. If unable to connect lamp connector with lamp base, rotate lamp connector 180 degrees and try again.

- Ensure lamp connector and lamp base are firmly pressed together.



WALL MOUNT-INSTALLATION

STEP 16: Re-install optic reflection plate.



STEP 17: Connect the speed control/cover by means of the 'quick connect' that was disconnected in Step 3. Connectors are keyed and only fit in one direction. Re-install cover by first latching the top behind the back panel. Gently lower the bottom of the cover until all four screw holes line up. Secure cover with four screws removed in Step 2. Maintain pressure on cover while installing four screws to avoid cross-threading.

STEP 18: Turn on electrical service.

STEP 19: Turn on Slimline™ Hydroxyl Generator and set for desired airflow.



Operating Guidelines

The Slimline™ unit is designed for smaller spaces where a portable or wall-mounted unit is sought. It is ideal for offices and schools, senior living, conference and waiting rooms, and other commercial applications that are seeking to sanitize and deodorize indoor spaces.

The table below summarizes the minimum treatment area in the absence of ventilation, and the treatment area range under typical operating conditions: 3 air changes per hour, 90% recirculated air, and 9 foot (2.7 m) ceilings. These guidelines should be adhered to for optimal performance and safety.

Minimum Area (no circ)	240 ft ² [22 m ²]
Treatment Range (ft²)	215 - 900
Treatment Range (m²)	20 - 84

Operating Instructions

POWER ON

The main power for the Slimline™ can be switched on by turning the rotary switch clockwise.

POWER OFF

The main power for the Slimline™ can be switched off by turning the rotary switch counter clockwise to the “Off” position.

FAN SPEED

The Slimline™ is equipped with an air mover fan, which runs between 80-155ft²/m [135-263m²/h] (Model SLM01TAA) or 100-200ft²/m [169-339m²/h] (Model SLi01TAA).

In order for the fan to turn on, the rotary switch must be rotated clockwise. Once turned on, the fan speed can be controlled by turning the rotary switch clockwise to decrease the speed, or counter clockwise to increase the speed.

GENERATOR

The Slimline™ is equipped with one hydroxyl generating optic. In order for the optic to turn on, the rotary switch must be turned on.

With the rotary switch in the “Off” position, the optic will likewise be off.

Caring For Your Slimline™

⚠ Caution: DISCONNECT the unit from an electrical power source before performing any maintenance or cleaning on the unit.

SYSTEM CASE CLEANING

EXTERIOR

The exterior of the Slimline™ can be cleaned with mild dishwashing detergent and a clean damp cloth. DO NOT use any all-purpose cleaners with harsh detergents or abrasives, as these may damage the decals and the exterior finish. Care should also be taken to avoid spraying or otherwise directing detergent or water into or around electrical components.

INTERIOR

The interior of the Slimline™ can be cleaned in the same manner as the exterior.

OPTIC CLEANING

Cleaning of the optics is recommended to maintain peak processing efficiency. Fingerprints, smudges, dirt, dust particles, etc. will interfere with the hydroxyl production and should be removed.

Note: Remove the optics from the optic chamber prior to cleaning to avoid any damage to the optics during the cleaning process (refer to the Optic Replacement Instructions for proper removal).

To clean the optics, use a solution of 10% Isopropyl Alcohol and 90% filtered/distilled water on a clean lint-free cloth and wipe gently. DO NOT use any type of commercial glass cleaner. Using another lint-free cloth, gently wipe the optic until completely dry. Allow the optic to dry completely before operating the system.

Optic Replacement Instructions

⚠ Warning: DISCONNECT the unit from the electrical power source before performing any maintenance or cleaning on the Slimline™ Unit.

⚠ Caution: Optics contain Mercury. Read and follow the Safety Information on pages 3 and 4 of this manual when handling the optics in the Slimline™ unit.

STEP 1: Turn Main Power switch to the “Off” position

STEP 2: Unplug power cord from the electrical receptacle

STEP 3: Using the supplied key, unlock and remove both end panels

STEP 4: Remove optics following these instructions:

CAUTION!: Use clean powde-free latex gloves and eye protection when handling the optics in this unit

- With a firm grip on the upper porcelain end of the optic, use your other hand to grip the optic connector
- Gently ‘wiggle’ connector while pulling from the optic base
- Gently pull optic from three lamp supports (**DO NOT put any pressure on the side of the optic without support**)

STEP 5: Install new optic following these instructions:

- Remove new optic from packaging and gently insert into the three optic clips
- With a firm grip on the upper porcelain end of the optic, use your other hand to grip the optic connector
- Gently connect the optic connector to the optic

Note: Optic connector is keyed with the optic base and will connect in one direction only

- Ensure optic connector and optic base are firmly pressed together

STEP 6: Re-install end panels and lock with the supplied key

STEP 7: Plug power cord back into the electrical receptacle

STEP 8: Test unit for proper operation

Scan the QR code for the optic replacement instruction video.



Filter Cleaning & Replacement

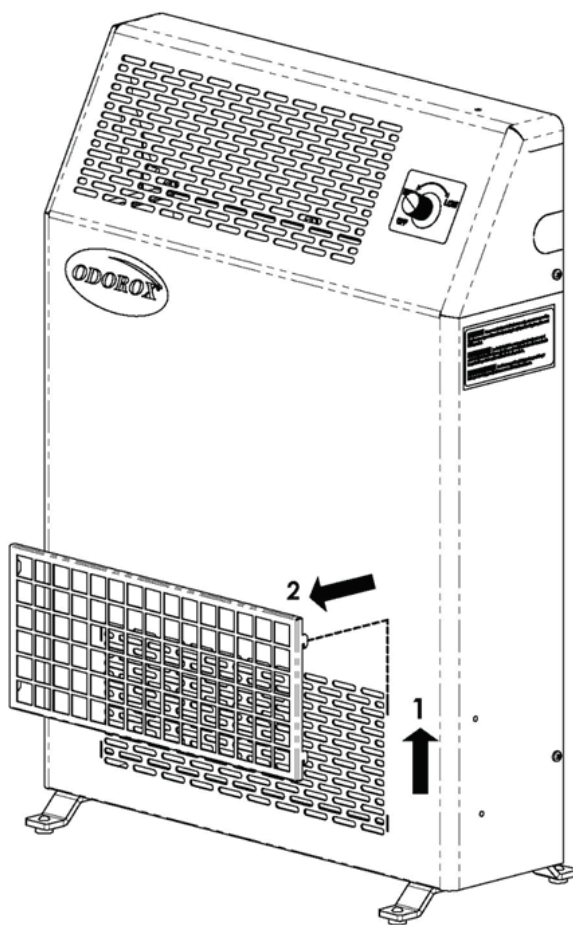
⚠ Warning: DISCONNECT the unit from the electrical power source before performing any maintenance or cleaning on the Slimline™ Unit.

STEP 1: Turn Main Power switch to the “Off” position

STEP 2: Unplug power cord from the electrical receptacle, or turn off electrical breaker if unit is hard-wired

STEP 3: Lift up on the metal filter retainer (motion 1 in diagram below) and then pull out (motion 2 in diagram below)

STEP 4: Remove filter and wash or replace (if washing, allow to totally dry before re-installing)



Scan the QR code for the filter replacement instruction video.



STEP 5: Re-install clean/new filter in filter retainer, line up with tabs on main unit and push in place (reverse of motion 2 in diagram above)

STEP 6: Push metal filter retainer down to lock in place (reverse of motion 1 in diagram above)

Specifications

Dimensions (LxWxD):	18.00" [457.20mm] x 5.25" [133.35mm] x 25.00" [635.00mm]
Weight:	17.60lbs [7.98kg]
Voltage:	Model SLM01TAA - 120VAC, 60Hz Model SLi01TAA - 210-240VAC, 50/60Hz
Power:	145W (Nominal) / 170W (Max)
Control:	Variable Speed Switch
Noise Level:	<55dBA
Optics:	1
Fan:	Model SLM01TAA - 80-155ft ² /m [135-263m ² /h] Model SLi01TAA - 100-200ft ² /m [169-339m ² /h]
Filter:	5.00" [127.00mm] x 12.50" [317.50mm] x 0.25" [6.35mm]
Certifications:	Model SLM01TAA - ETL US/Canada Model SLi01TAA - CE

Replacement Parts

For replacement parts, warranty service, or any questions regarding the operation and maintenance of your Slimline™, please contact your local authorized dealer.

For a list of authorized dealers in your area, please visit www.pyure.com

Limited Warranty

The PYURE Company warrants that this Slimline™ (excluding spare parts and consumables) shall be free from defects in workmanship or materials for a period of two (2) years from the date of purchase.

PLEASE KEEP THIS PART FOR YOUR RECORDS

Serial #: _____

Model #: _____

Date of Purchase: _____

Vendor Name: _____

The Pyure Company
2055 High Ridge Road
Boynton Beach, FL 33426

(561) 735-3701 | www.pyure.com

Complete below and reverse side. Tear along perforation
and mail to The PYURE Company within 60 days of purchase.

**You may also visit www.pyure.com/warranty-registration and register
your warranty on-line.**

From: _____

Place
Stamp
Here

The Pyure Company
2055 High Ridge Road
Boynton Beach, FL 33426

The PYURE Company ("PYURE") warrants that the product set forth below will be free from defects in materials and workmanship for the period of two (2) years from the date of original purchase under the following terms and conditions: To obtain service under this warranty, send or deliver this product within the warranty period together with the warranty certificate to any PYURE regional office or PYURE authorized warranty service center. If requested, by PYURE or a PYURE authorized service center, you must present proof of purchase showing date and place of purchase. If upon inspection by PYURE or an PYURE authorized warranty service center, the product is proved to be defective, it will be repaired without charge using, if necessary, new parts or comparable used parts that have been fully reconditioned and returned to you. The warranty period for replacement parts shall extend for a period of six (6) months following the installation of same or for the remaining period of this warranty whichever is longer. This warranty card does not apply in the following cases: (a) damage to product due to mishandling, alteration, failure to follow operation, maintenance or environmental instructions prescribed by applicable instruction manual or shipping damage; (b) damage caused during service performed other than PYURE or an PYURE authorized service center; (c) if the product has had its serial number(s) or other identifying data removed; or (d) damage, defect or unsatisfactory performance caused by the use of equipment not manufactured or distributed by PYURE. IN NO EVENT WILL PYURE BE LIABLE FOR ANY DAMAGE, INCLUDING INCONVENIENCE, LOST PROFITS, OR LOST SAVINGS, OTHER INCIDENTAL DAMAGE STEMMING FROM THE USE OF THE PRODUCT OR OUT OF DEFECTS THEREIN, OR BY BREACH OF THIS EXPRESSED WARRANTY OR ANY IMPLIED WARRANTY WITH THE RESPECT OF THIS PRODUCT, WHETHER ON ACCOUNT OF NEGLIGENCE OR OTHERWISE, EVEN IF PYURE OR AN PYURE AUTHORIZED WARRANTY SERVICE CENTER HAS BEEN ADVISED OF THE POSSIBILITY OF SUCH DAMAGES.

Some states or provinces do not allow limitations on how long an implied warranty lasts or limitations of incidental or consequential damages, so the above limitations may not apply to you. This warranty gives you specific legal rights and you may also have other rights which vary from state to state or province to province.

Purchaser's Name: _____

Address: _____

City: _____ **State/Prov:** _____

ZIP/Postal Code: _____

Purchaser's Type of Business: _____

Primary Use for Machine: _____

Model Type: _____ **Serial #:** _____

Vendor's Name: _____

Vendor's Address: _____

Limited Use End-User License Agreement

This End-User License Agreement (EULA) is a legal agreement between you (either an individual or a single entity) and the mentioned owner (The PYURE Company) of any computer software which may include associated firmware, media, printed materials, and “online” or electronic documentation (“Licensed PYURE Software”).

By installing, copying, or otherwise using the Licensed PYURE Software, you agree to be bounded by the terms of this EULA. If you do not agree to the terms of this EULA, do not install or use the Licensed PYURE Software in the Odorox® product.

Licensed PYURE Software.

The Licensed PYURE Software is protected by U.S. and international copyright, patent, trade secret laws and well as other international intellectual property laws and treaties. Upon your acceptance of this EULA, The PYURE Company grants to you a nonexclusive, revocable license to use the Licensed PYURE Software, provided that you agree to the following:

1. Grant of License.

The Licensed PYURE Software is licensed, not sold. You own a copy of any media or hardware on which the Licensed PYURE Software is shipped, but not a copy of the Licensed PYURE Software itself. The PYURE Company retains all title, copyrights, and other intellectual property rights in the Licensed PYURE Software and any copies thereof. You may use a copy of the Licensed PYURE Software with any Odorox® product for which you have accepted the terms of this EULA.

2. Restrictions.

You must maintain all notices including copyrights on all copies of the Licensed PYURE Software. You may not modify, adapt, translate, reverse engineer, decompile, disassemble, or otherwise attempt to learn the source code of the Licensed PYURE Software, except and only to the extent that such activity is expressly permitted by applicable law notwithstanding this limitation.

3. Termination.

Your rights under this EULA terminate upon your termination of this EULA, or without prejudice to any other rights, The PYURE Company may terminate this EULA if you fail to comply with its terms and conditions. In such event, you must destroy all copies of the Licensed PYURE Software.

4. No Software Warranty Independent from Other Warranties.

The Licensed PYURE Software is being delivered to you “AS IS” and The PYURE Company makes no warranty as to its use or performance, other than any the “Limited Warranty” on the Odorox® product described above.

5. LIMITATION OF LIABILITY.

TO THE MAXIMUM EXTENT PERMITTED BY APPLICABLE LAW, IN NO EVENT SHALL THE PYURE COMPANY OR ITS SUPPLIERS BE LIABLE FOR ANY SPECIAL, INCIDENTAL, INDIRECT, OR CONSEQUENTIAL DAMAGES

OR ANY DAMAGES WHATSOEVER (INCLUDING, WITHOUT LIMITATION, DAMAGES FOR LOSS OF BUSINESS PROFITS, BUSINESS INTERRUPTION, LOSS OF BUSINESS INFORMATION, LOSS OF SAVINGS, OR ANY OTHER PECUNIARY LOSS) ARISING OUT OF THE USE OF OR INABILITY TO USE THE LICENSED PYURE SOFTWARE PRODUCT, OR FOR PROVISION OF OR FAILURE TO PROVIDE SUPPORT SERVICES, EVEN IF THE PYURE COMPANY HAS BEEN ADVISED OF THE POSSIBILITY OF SUCH DAMAGES.

THE ENTIRE LIABILITY OF THE PYURE COMPANY AND YOUR EXCLUSIVE REMEDY UNDER THIS EULA IS, AT THE OPTION OF THE PYURE COMPANY, CORRECTING OR WORKING AROUND ERRORS, REPLACING THE MEDIA, OR REFUNDING THE PURCHASE PRICE. IN NO EVENT SHALL THE PYURE COMPANY'S ENTIRE LIABILITY UNDER THIS EULA EXCEED THE PURCHASE PRICE (EVEN IF THE LICENSED PYURE SOFTWARE PRODUCT IS DOWNLOADED WITH OTHER THIRD PARTY SOFTWARE FREE OF CHARGE) OF THE LICENSED PYURE SOFTWARE PRODUCT.

6. Miscellaneous.

This EULA is governed by the laws of the State of Florida, U.S.A., and jurisdiction for any action based on the Licensed PYURE Software shall lie in a court located in Palm Beach County Florida. If any part of this EULA is found void and unenforceable, it will not affect the validity of the balance of the EULA, which shall remain valid and enforceable according to its terms. Should you have any questions concerning this EULA, or if you desire to contact The PYURE Company for any reason, please visit: www.pyure.com/contact.



Need Support?

Contact our support team

+1 (877) 735-3701
sales@pyure.com

Copyright 2023, The Pyure Company
ODOROX®, Slimline™, and Powered by PYURE Technology™ are
trademarks of The Pyure Company, Boynton Beach, FL 33426 USA
Document# SLM01LP000